

How To Replace Internal Battery

1. Open the back cover by unscrewing



2. Remove the internal hard drive disk



3. Open the front cover by unscrewing



※ Be careful missing the screw-brackets



4. Remove two black screws from PCB panel



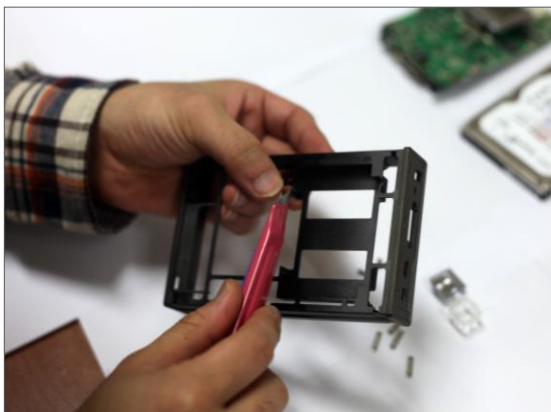
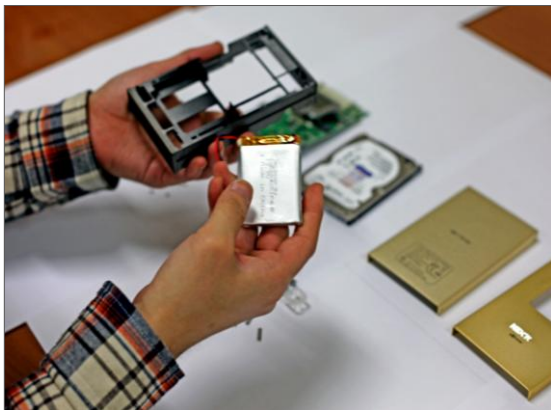
5. Pull out the small-white battery connector



6. Remove the PCB panel



7. Mount new internal battery



※ Some of New battery could be bigger than mount place.

In this case, please cut out the two parts like left picture

8. Put the front cover back and screw



9. Mount the PCB panel



10. Screw to hold the PCB panel



11. Connect the small-white battery connector



12. Mount the internal hard drive disk



13. Put the back cover back and screw

